


**JX
RIG**


Mobile, self-erecting
and radio-controlled
(optional extra).

JX Piling Rig

The JX Piling Rig is mobile, self-erecting and radio-controlled. The rig is mounted on a JCB base unit, uses a 12.5m single piling mast, and any one of the three BSP-TEX hydraulically accelerated piling hammers from the DX range. The JX Piling Rig is capable of driving steel, wood or concrete piles up to 8m in length.



Dropweight Mass
1500–2500 kg



Hammer Energy
20–30 kN.m



BSP-TEX LTD

Claydon Business Park, Gipping Road,
Grt. Blakenham, Ipswich, Suffolk, IP6 0NL, UK

Tel: +44 (0)1473 830431

Email: sales-bsp@tex.co.uk
www.bsptex.com



Made in the UK

**JX
RIG**

A primary braked piling winch carries the 3.9–5.5t piling hammer, and a secondary winch is used to handle the piles. The rig also incorporates a mast foot and pile guide. Refer to the DX hammer range data sheet for more detailed information.

Requiring just 150 litres per minute of oil flow at 150–170 bar, the high-performance hammer can deliver up to 30kNm of energy at 60bpm. This performance exceeds the requirement on most projects for concrete driven piles, resulting in the machine working at approximately 50% power. Fuel consumption of the JX Piling Rig is an economical 10 litres per hour.

The combined weight of the rig is 28.6t and this light weight, combined with a wide and long undercarriage, reduces the ground pressure imposed by the machine to just 82kN/m² without a pile.

28.6t transport weight (inc. hammer), 13m working height, 8m max. pile length and 3.09m width.

**BSP-TEX LTD**

Claydon Business Park, Gipping Road,
Grt. Blakenham, Ipswich, Suffolk, IP6 0NL, UK

Tel: +44 (0)1473 830431
Email: sales-bsp@tex.co.uk
www.bsptex.com



Made in the UK

**SPEED**

The JX Piling Rig is self-erecting and mobilised in minutes from arrival on site. The double acting cylinder produces a fast blow rate.

POWER

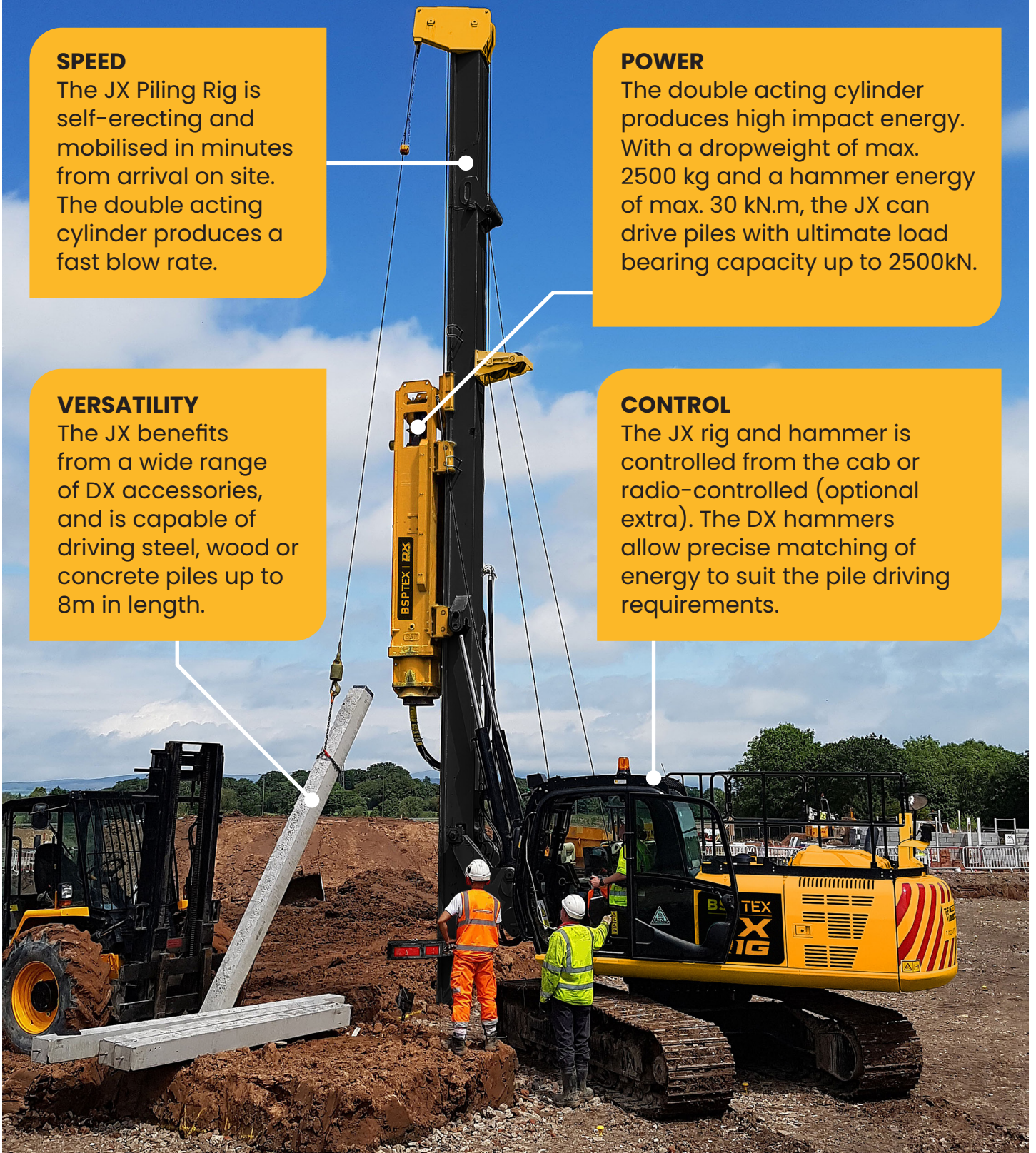
The double acting cylinder produces high impact energy. With a dropweight of max. 2500 kg and a hammer energy of max. 30 kN.m, the JX can drive piles with ultimate load bearing capacity up to 2500kN.

VERSATILITY

The JX benefits from a wide range of DX accessories, and is capable of driving steel, wood or concrete piles up to 8m in length.

CONTROL

The JX rig and hammer is controlled from the cab or radio-controlled (optional extra). The DX hammers allow precise matching of energy to suit the pile driving requirements.

**BSP-TEX LTD**

Claydon Business Park, Gipping Road,
Grt. Blakenham, Ipswich, Suffolk, IP6 0NL, UK

Tel: +44 (0)1473 830431
Email: sales-bsp@tex.co.uk
www.bsptex.com



Made in the UK



- **Mobile and self-erecting**
- **Radio-controlled option available**
- **Uses hydraulic hammers from the DX range**
- **Double acting cylinder produces high impact energy and fast blow rate**
- **Economical - low hydraulic power requirements**
- **Can drive piles with ultimate load bearing up to 2500kN**
- **Available with synchronised hammer and pile winches**

Above: Mobile, self-erecting and radio-controlled.

Above left: Uses hydraulic hammers from the DX range.

Top right: Cab control and monitoring equipment.



BSP-TEX LTD

Claydon Business Park, Gipping Road,
Grt. Blakenham, Ipswich, Suffolk, IP6 0NL, UK

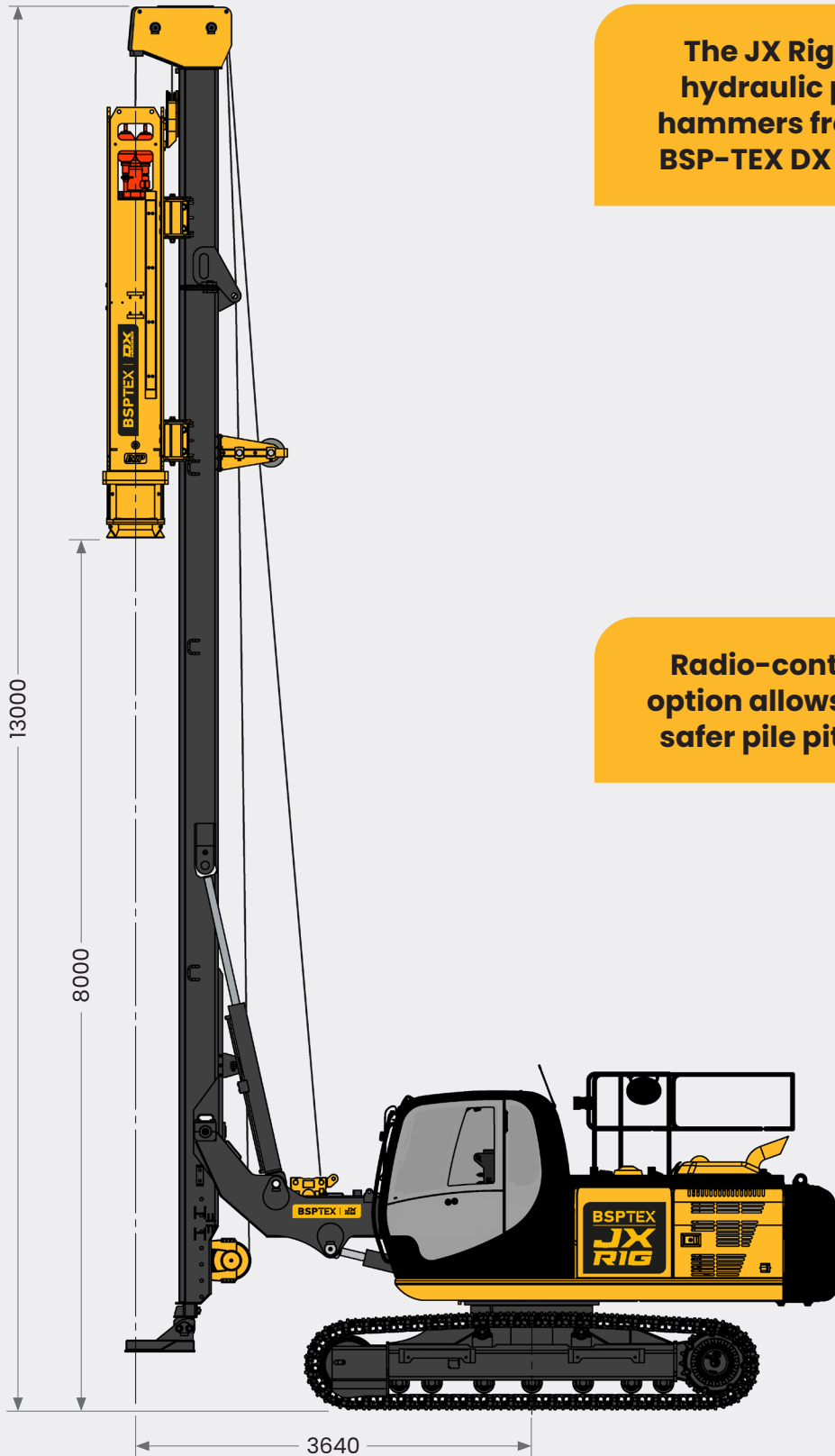
Tel: +44 (0)1473 830431
Email: sales-bsp@tex.co.uk
www.bsptex.com



Made in the UK



**JX
RIG**



The JX Rig uses hydraulic piling hammers from the BSP-TEX DX range.

Radio-controlled option allows faster, safer pile pitching.

BSP-TEX reserve the right to amend specifications at any time.



BSP-TEX LTD

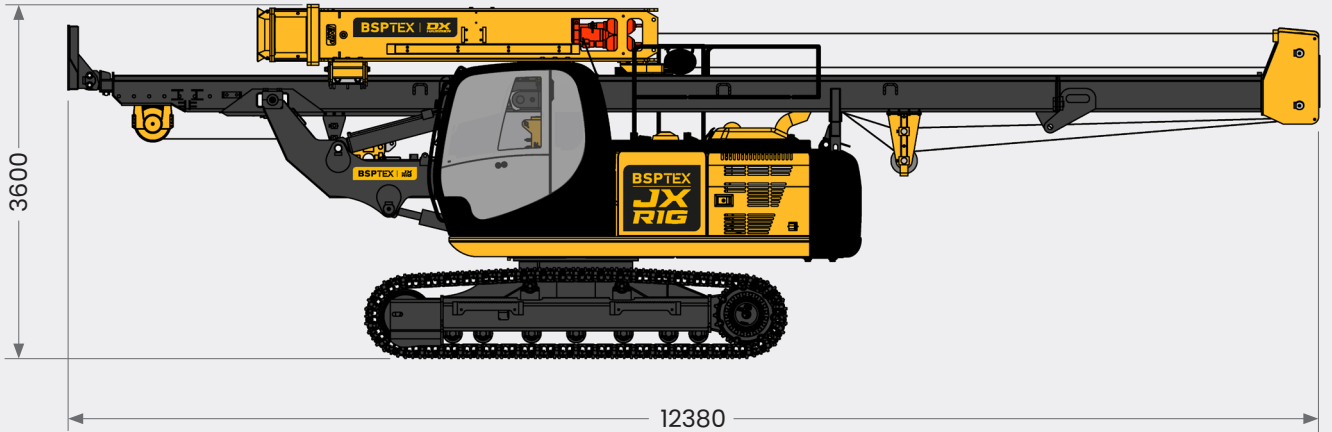
Claydon Business Park, Gipping Road,
Grt. Blakenham, Ipswich, Suffolk, IP6 0NL, UK

Tel: +44 (0)1473 830431

Email: sales-bsp@tex.co.uk
www.bsptex.com



Made in the UK



BSP-TEX reserve the right to amend specifications at any time.

JX Specifications	DX25-8
Working Height (m)	13
Max Pile Length (m)	8
Base Unit Model	JCB 220X-LC
Engine Type	Ecomax
Power Output (kW)	129
Track Pad Width (mm)	700
Track Footprint (m)	4.46 x 3.10
Operating Radius (m) CL Rot'n to Pile	3.64
Operating Weight (kg) inc. hammer & max pile	30300
Transport Weight (kg) inc. hammer	28600
Transport Length (m)	12.38
Transport Width (m)	3.10
Transport Height (m) incl. hammer	3.60
Compatible BSP Hammers	DX20-30
Engine Emission Status (EU)	Stage-V
Engine Emission Status (EPA)	Tier 4



BSP-TEX LTD
 Claydon Business Park, Gipping Road,
 Grt. Blakenham, Ipswich, Suffolk, IP6 0NL, UK

Tel: +44 (0)1473 830431
 Email: sales-bsp@tex.co.uk
 www.bsptex.com



Made in the UK