



TELESCOPIC WHEEL LOADER | TM180/TM220

Gross power: TM180 48kW/64hp, TM220 54.5kW/74hp | Payload: TM180 1,800kg, TM220 2,200kg | Lift height: TM180 4,534mm, TM220 4,603mm



PRODUCTIVE PERFORMANCE.

THE NEW JCB TM180 AND TM220 BOTH MEET STAGE V EMISSIONS LEGISLATION. THESE COMPACT TELESCOPIC WHEEL LOADERS ARE VERY VERSATILE MACHINES WITH OPTIMUM POWER-TO-WEIGHT RATIO MAKING THEM HIGHLY PRODUCTIVE MATERIAL HANDLERS.

JCB Diesel by Kohler.

1 JCB has worked in close collaboration with Kohler to produce the ultimate compact telescopic wheel loader engine with high power and torque produced at low revs.

2 The TM220 has a high speed option – this provides a 40km/h top speed.

3 Hydrostatic drive makes these models very easy to operate even for the inexperienced. That means there's less risk of overpowering the machine at the expense of fuel economy.

New Eco Mode feature improves fuel efficiency. The Auto Idle Shutdown feature turns the engine off after a set period of no use, reducing fuel usage.



1



2



3

All the versatility you need.

4 JCB's articulated steering boasts an easy-to-use built-in sideshift which is ideal for placing bales and changing attachments.

5 So that you can tailor your telescopic wheel loader to any application, we offer several different axle options. Open diffs are ideal for hard ground and limited slip diffs excel on soft muddy terrain.

Our 100% switchable front axle diff lock on the TM180 and TM220, meanwhile, provides ultimate traction on muddy terrain and creates no shear forces, so won't damage the ground when not in use. It can also be engaged on the move and under load.

6 Power from the driveline is transferred to the ground very efficiently through an innovative chassis, with perfect harmony between all components. This makes our machines the best possible solution.

7 Equip your telescopic wheel loader with our towing option and you'll get a hitch with rear electrics and hydraulics, allowing you to trailer loads up to 3.5 tonnes or carry rear attachments like salt spreaders.

8 Our inching pedal economically splits engine power from tyres to work frame in order to maximise power of the machine for precise, efficient material handling.



4



5



With our High Flow option, you get an extra 30 litres of hydraulic capacity for an enhanced flow rate.

6



7



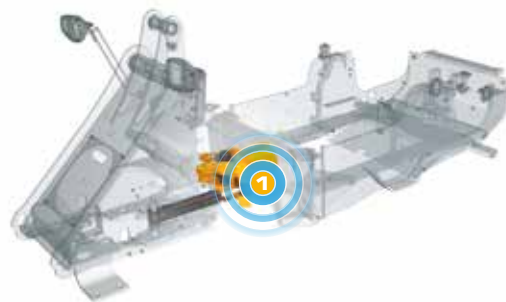
8

QUALITY AND RELIABILITY BUILT IN.

JCB KNOWS THAT A TELESCOPIC WHEEL LOADER IS A KEY PART OF THE ON-SITE PROCESS. THAT'S WHY THE NEW TM180 AND TM220 ARE BUILT ON A FOUNDATION OF QUALITY AND RELIABILITY. THE STANDARDS WE'VE USED FROM DESIGN TO MANUFACTURE WILL SAFEGUARD YOUR WORKING PROCESS, HOUR AFTER HOUR, DAY AFTER DAY.

Proven build quality.

1 With our knowledge of materials handling JCB does not accept compromises when developing machines. Proof of this is our strong heavy-duty centre joint which oscillates through ± 10 degrees.



2 Recessed rear lights are protected within the solid counterweight casting for good impact protection.



3 Hydraulic hoses are well protected, being neatly routed, clamped and positioned well away from all pinching areas.



4 We use state-of-the-art manufacturing processes like robot machining, precision paint technology and innovative assembly techniques to achieve the very highest levels of quality.



5 Precision machining provides high tolerances and accurate location of pins and bushes.



Stronger by design.

6 The core of the TM180 and TM220 has been built using the finest quality engine, driveline and axle components from suppliers like DANA and Bosch.

7 These machines benefit from a strong chassis and the best possible weight distribution to allow for better absorption of external forces into the machine.

8 Finite element analysis and rig testing ensure superior structural strength and durability. Cold cell testing guarantees starting performance at temperatures as low as -20 degrees.



6



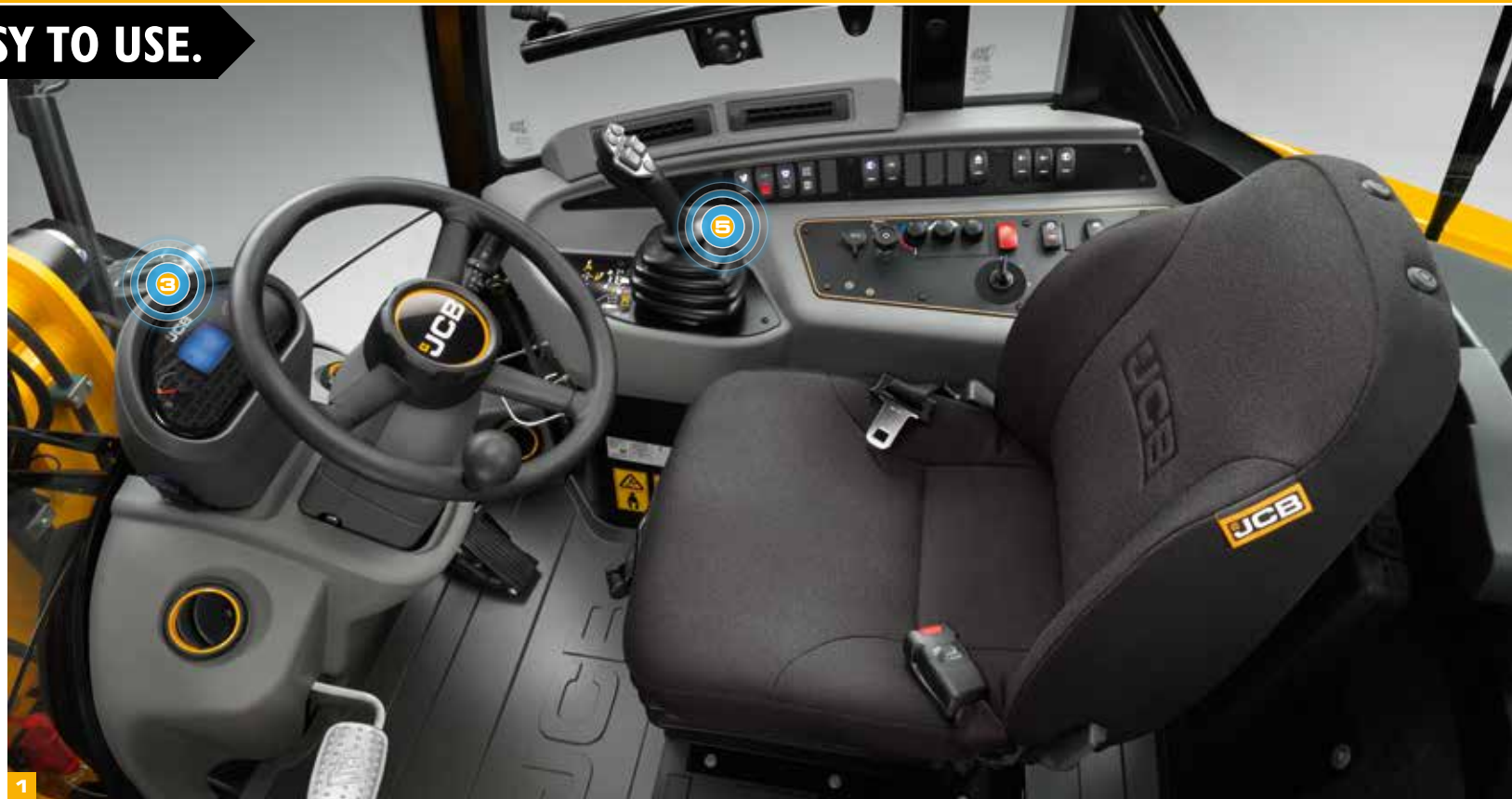
7



8

COMFORTABLE AND EASY TO USE.

THE NEW TM180 AND TM220 TELESCOPIC WHEEL LOADERS ARE DESIGNED TO MAKE WORK EASIER. THEIR NEXT GENERATION CABS ARE EASY TO ACCESS, INTUITIVE TO OPERATE AND THEY'RE OPERATED FROM THE CENTRE OF THE MACHINE FOR SUPERB VISIBILITY. ULTIMATELY, A COMFORTABLE, CONFIDENT OPERATOR IS A MORE PRODUCTIVE ONE.



Designed around you.

- 1** All-new next generation styling in the cab includes new right hand arm rest designed for improved operator working and an easy to clean floor mat.
- 2** A new next generation tilting and telescopic steering column provides easy adjustment for maximum comfort. A new steering wheel features soft grip for improved comfort and style.

- 3** A stylish modern central dash display combines analogue dials and a colour LCD screen which can display machine health details, service requirements, operating information and more.
- 4** All the instruments needed to operate a JCB telescopic wheel loader are within easy reach of the seat, so there's no need to hunt around for information whilst working.



Greater comfort and control.

5 Ergonomically designed joystick for more comfortable and intuitive operation.

The TM180 has reduced in-cab noise levels of 78dB with just 76dB for the TM220.

6 Fully opening right hand window as standard providing increased ventilation while still being protected from dust.

7 Raised driving position provides increased forward and rearward visibility with superb all-round machine visibility.



SERVICEABILITY.

THE NEW JCB TMI80 AND TM220 BENEFIT FROM INNOVATIVE DESIGN AND QUALITY COMPONENTS, ALLOWING THEM TO SPEND AS MUCH TIME AS POSSIBLE HARD AT WORK WITH LONG SERVICE INTERVALS.

Service with a smile.

1 Gain access to the engine bay and cooling pack areas easily with the large single piece bonnet. All daily check points can also be easily accessed under the bonnet.

2 The DPF is well positioned making it easy to replace without removing other components.

3 Both the new TMI80 and TM220 share common parts with other JCB machines making for even greater availability.

4 Cab air filter and electrical fuses sit under the HVAC for easy ground level access.

5 The battery is easily located in a secure locking box.

Electronic engine has more information available which is displayed on the cab EMS and also through JCB LiveLink, including running hours, error information and DPF status.



1



3



4



5

SAFETY AND SECURITY.

BECAUSE SAFETY AND SECURITY ARE PARAMOUNT ON ANY SITE, THE JCB TM180 AND TM220 ARE DESIGNED TO PROTECT THEIR OPERATORS, THEMSELVES AND ANY BYSTANDERS AT ALL TIMES. GREAT VISIBILITY, ANTI-THEFT FEATURES AND NON-SLIP SURFACES ARE JUST THE START.

Total safety.

- 1 The new TM180 and TM220 can be fitted with an immobiliser as an option to help prevent thefts from your fleet.
- 2 Access steps are inclined and equally spaced, complemented by well positioned grab handles for three points of contact at all times.
- 3 Engine mounted DPF is secure under lockable bonnet.
- 4 Our in-cab, electronic 2-stage quickhitch isolation system protects against uncontrolled release of attachments.
- 5 A seat switch monitors if an operator is present and stops the engine if not, preventing any movement of the machine.





LIVELINK TELEMATICS.

LiveLink telematics helps you monitor and manage your machine fleet remotely anywhere in the world by radically improving the efficiency, productivity, safety and security of all your JCB and non JCB machine fleet.

MACHINE EFFICIENCY: Keep track of your machine's daily activity with regular performance reports which provide information about idle time, location, machine health, error codes for diagnostics, engine utilisation by power band, safety alerts, and fuel consumption. JCB LiveLink ensures machines are kept running for maximum uptime and return on investment.

MACHINE RELIABILITY: Accurate hours and service alerts improve maintenance planning to optimise machine productivity.

MACHINE SECURITY: LiveLink's real time geo-fencing alerts tell you when machines move out of predetermined zones. Curfew alerts inform you of unauthorised usage.



Track the location of any asset via Bluetooth connection.



An after market telematics solution which can be retrofitted to any machine.



COMPLETE CONTROL FOR YOUR FLEET.

LiveLink Fleet enables you to track every aspect of your equipment to maximise efficiency and machine uptime.

GUESS LESS, KNOW MORE: Equipment issues and service reminders are logged as soon as they occur, helping you to react quickly.

YOUR EYES ON THE GROUND: Integrate LiveLink Fleet with the JCB Operator mobile app and data from your operators' daily equipment checks feed instantly into your dashboard.

TOTAL PEACE OF MIND: Operator safety alerts help to ensure machines are being used efficiently and safely.

SMARTER TOOLS. SMARTER DECISIONS: From hours worked to fuel wastage, access custom analytics on your fleet to make smarter decisions, quicker.

EFFORTLESS MEETS PAPERLESS: Access certificates, warranty information, quick start machine guides and manuals.

The JCB Operator app

THEY SPOT IT, YOU KNOW IT.

The JCB Operator app gives you faster, clearer and more accurate information about your fleet, direct from the people using your equipment each day.

STAY IN TOUCH: Get regular checks on your machine with visibility in the LiveLink Fleet portal.

TAILOR YOUR CHECKS: Customise your checklists to suit any application, customer or site.

UPLOAD TO KEEP UPDATED: Upload useful information with photos and comments.

FULLY COMPATIBLE: The JCB Operator app works with non telemetry related machines and assets.

ACCESS ALL INFORMATION: Get access to documentation such as quick start guides.

*The individual features of LiveLink Telematics, LiveLink Fleet and Operator App vary per region, engine and machine type.

VALUE ADDED.

JCB'S WORLDWIDE CUSTOMER SUPPORT IS FIRST CLASS. WHATEVER YOU NEED AND WHEREVER YOU ARE, WE'LL BE AVAILABLE QUICKLY AND EFFICIENTLY TO HELP MAKE SURE YOUR MACHINERY IS PERFORMING TO ITS FULL POTENTIAL.



1

1 Our Technical Support Service provides instant access to factory expertise, day or night, while our Finance and Insurance teams are always on hand to provide fast, flexible, competitive quotes.

2 The global network of JCB Parts Centres is another model of efficiency; with 18 regional bases, we can deliver around 95% of all parts anywhere in the world within 24 hours. Our genuine JCB parts are designed to work in perfect harmony with your machine for optimum performance and productivity.



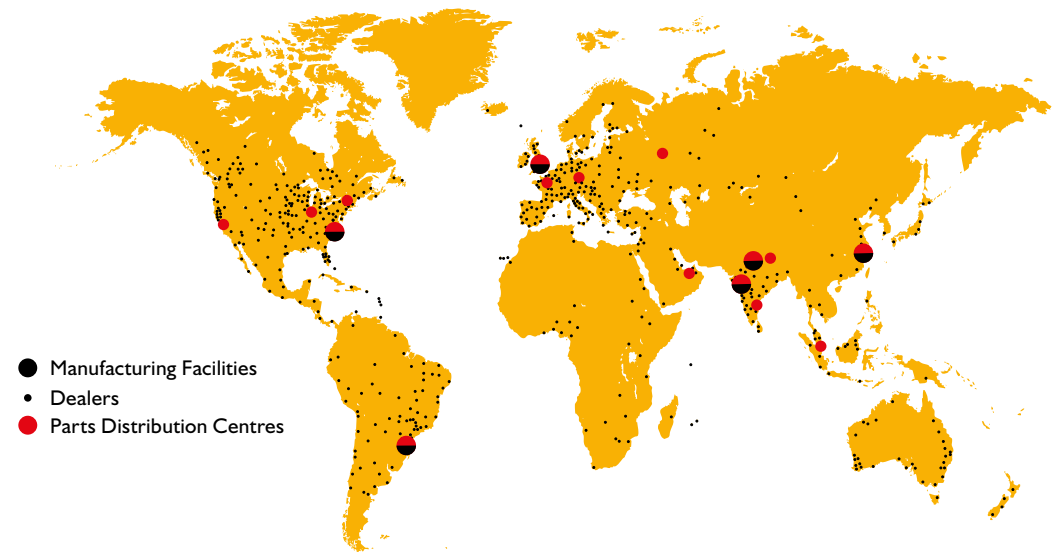
2

3 JCB offers comprehensive extended warranties and service agreements, as well as service-only or repair and maintenance contracts. Irrespective of what you opt for, our Maintenance teams around the world charge competitive labour rates, and offer non-obligation quotations as well as fast, efficient insurance repair work.

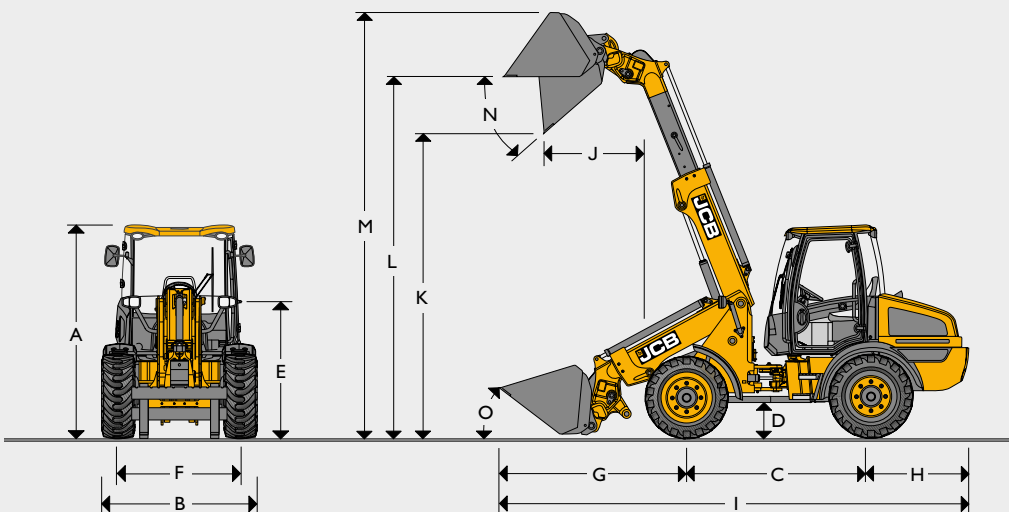


3

Note: JCB LIVELINK and JCB extended warranties may not be available in your region, so please check with your local dealer.



STATIC DIMENSIONS



Machine Model		TM180	TM220	
A	Overall height	mm	2460	2642
B	Overall width (over tyres)	mm	1736	1904
C	Wheelbase	mm	2200	2205
D	Ground clearance	mm	330	330
E	Height to top of boom pivot	mm	1602	1667
F	Wheel track	mm	1396	1490
G	Axle to shovel toe plate	mm	2633	2558
H	Axle to counterweight face	mm	1268	1295
I	Total length	mm	6003	5998
J	Dump reach	mm	1202	1136
K	Dump height	mm	3573	3636
L	Load over height	mm	4299	4362
M	Pin height	mm	4707	4772
N	Maximum dump angle	degrees	43	43
O	Roll back at carry	degrees	41	41
	Total length to front of hitch	mm	4885	4885
	Inside radius	mm	2105	2090
	Outside radius (edge of tyre)	mm	3955	4030
	Outside radius (over shovel)	mm	4480	4755
	Articulation angle	degrees	±40	±40
	Operating weight	kg	5983	6495
	Front axle weight	kg	2725	2632
	Rear axle weight	kg	3258	3863
	Tyres used for specification		340/80 R18	400/70 R20
	Bucket used for specification		0.8m ³ GP	0.9m ³ GP
	Hitch used for specification		Pin and Cone	Pin and Cone

ENGINE

Machine Model		TM180	TM220
Manufacturer		JCB Diesel by Kohler	
Model		KDI 2504 TCR	
Capacity	litres	2.482	
Bore	mm	88	
Stroke	mm	102	
Aspiration		Turbocharged	
Number of cylinders		4	
Emissions		EU Stage V	
Power rating			
Gross power	kW (hp)	48 (64) @ 2200rpm	54.5 (74) @ 2200rpm
Net power	kW (hp)	43.5	53
Torque rating			
Max torque	Nm	300	

TRANSMISSION

Machine Model		TM180	TM220
Type		Hydrostatic	
Make		Rexroth	
Model		A6VM – 2 speed	
Model (40 kph option)		N/A	A6VM – 3 speed
Low range	kph	6	
High range	kph	20	
Max travel speed (optional)	kph	N/A	40

AXLES

Machine Model		TM180	TM220
Type		Straight beam	
Make		Dana Spicer	
Model		111	
Chassis angle oscillation	degrees	±10	

BRAKES

Machine Model		TM180	TM220
Service brake		In board oil immersed	
Parking brake		Spring actuated hydraulic released	

NOISE AND VIBRATION

		TM180	TM220	Uncertainty	Measurement conditions
Noise at the operator station	LpA	76	77	±1dB	Determined in accordance with the test method defined in ISO 6396 and the dynamic test condition defined on 2000/14/EC.
Noise emission from the machine	LWA	104	104	±1dB	Guaranteed equivalent sound power (external noise) determined in accordance with the dynamic test conditions defined in 2000/14/EC.
Whole body vibration	m/s ²	0.66	0.65	±0.11dB	ISO 2631-1:1997 normalised to an 8h reference period and based upon a test cycle comprising of loader work (soil).
Hand-arm vibration	m/s ²	<2.5	<2.5	n/a	ISO 5349-2:2001 dynamic test conditions.

SERVICE FILL CAPACITIES				
Machine model		TM180		TM220
Hydraulic tank & transmission	litres		70	
Fuel tank	litres		80	
Engine oil sump	litres		11.2	
Axle oil (front) including hubs	litres		4.4	
Axle oil (rear) including hubs	litres		6.05	

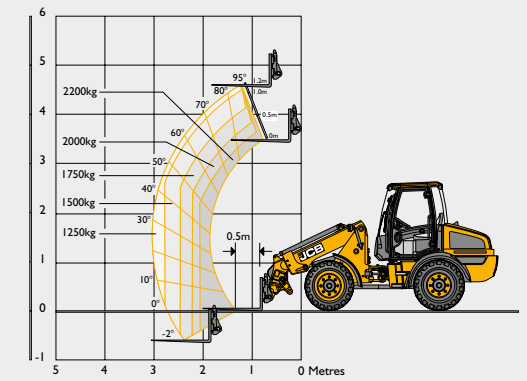
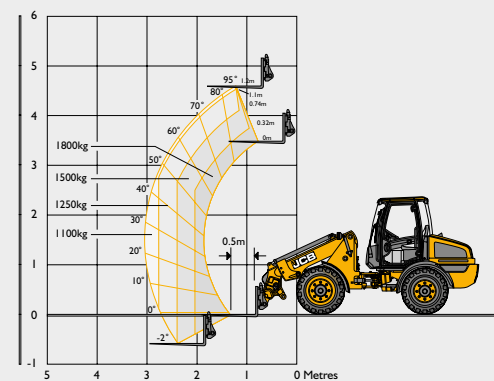
HYDRAULICS				
Machine model		TM180		TM220
Pump type			Single Gear	
Pump maximum flow	l/min	64		89
Pump maximum pressure	bar	230		250
Hydraulic cycle times				
Boom raise	seconds	6.2		4.3
Boom lower	seconds	5.1		4.5
Extend	seconds	5.3		3.6
Retract	seconds	4.4		2.9
Bucket dump	seconds	3.9		3.4
Bucket crowd	seconds	4.1		2.8
Total cycle time	seconds	29.0		21.5

ELECTRICAL SYSTEM				
Machine model		TM180		TM220
System voltage	Volt		12	
Alternator output	Amp Hour		80	
Battery capacity	Amp Hour		100	

TYRE OPTIONS – TM180						
Manufacturer	Size	Type	Application	Dimensional changes		
				Overall height (mm)	Width over tyres (mm)	
Dunlop	335/80 R18	SPT9 EM	EM	2	-25	
Dunlop	365/70 R18	SPT9 EM	EM	-8	44	
Dunlop	405/70 R18	SPT9 EM	EM	15	88	
Dunlop	335/80 R20	SPT9 MPT	EM	28	-47	
Michelin	340/80 R18	XMCL	Ag	0	0	
Michelin	340/80 R18	Bibload	Ag/EM	2	-3	
Michelin	400/70 R18	Bibload	Ag/EM	2	96	
Nokian	340/80 R18	TRI 2	EM	7	-13	
Camso	12.5- 18	SLR4	EM	6	-25	
Camso	12.5/80- 18	SLR4	EM	-9	-40	

TYRE OPTIONS - TM220						
Manufacturer	Size	Type	Application	Dimensional changes		
				Overall height (mm)	Width over tyres (mm)	
Dunlop	405/70 R18	SPT9 EM	EM	-20	-12	
Dunlop	335/80 R18	SPT9 MPT	EM	1	-89	
Dunlop	365/70 R18	SPT9 MPT	EM	21	-55	
Dunlop	405/70 R20	SPT9 MPT	EM	14	-11	
Michelin	380/75 R20	XMCL	Ag	0	-19	
Michelin	400/70 R20	XMCL	Ag	0	0	
Michelin	420/75 R20	XMCL	Ag	27	6	
Michelin	340/80 R20	Bibload	Ag/EM	-7	-59	
Michelin	400/70 R20	Bibload	Ag/EM	-1	-9	
Nokian	340/80 R18	TRI 2	EM	-28	-69	
Nokian	360/80 R20	TRI 2	EM	14	-55	

LOADER PERFORMANCE			
Machine model		TM180	TM220
Maximum lift capacity to full height with forks	kg	1800	2200
Lift capacity at full reach	kg	1100	1250
Lift height	mm	4534	4562
Maximum forward reach	mm	3107	3041
Straight tipping load – forks with 500mm load centre	kg	2950	3250
Full turn tipping load – forks with 500mm load centre	kg	2250	2750
Full turn tipping load – forks calculated @ 80% load factor	kg	1800	2200
Full turn tipping load – forks calculated @ 60% load factor	kg	1350	1650
Breakout force – tearout	kN	41.4	49.9



STANDARD/OPTIONAL EQUIPMENT

	TM180	TM220		TM180	TM220		TM180	TM220
ENGINE AND COOLING			CAB			CHASSIS AND BODYWORK		
64hp JCB engine	•	×	ROPS/FOPS safety structure	•	•	Articulated steering	•	•
74hp JCB engine	×	•	Laminated screen	•	•	Centre pivot oscillation	•	•
Cyclonic air filter	•	•	Fully adjustable mechanical seat	•	•	Plastic front and rear fenders	•	•
Widecore cooling pack	•	•	Air suspension seat	+	+	Fixed bottom step	•	•
Auto Idle Shutdown	•	•	Interior light	•	•	Recovery hitch	•	•
			Tilt and telescopic steering column	•	•	Grease gun and cartridge	+	+
TRANSMISSION / AXLES			Front and rear wash / wipe	•	•	Rockinger tow hitch	+	+
Hydrostatic transmission	•	•	3 speed heater fan	•	•	Rear electrics	+	+
20kph travel speed	•	•	Air conditioning	+	+	Rear auxiliary	+	+
40kph travel speed	×	+	RH opening window with lock back	•	•			
Transmission inching on footbrake	•	•	LH opening door with door lock back	•	•	LOADER		
Forward / reverse controls on joystick	•	•	LH Sliding window	+	+	Centre mounted single stage telescopic boom	•	•
In board oil immersed disc brakes	•	•	Single lever joystick controls	•	•	Parallel lift	•	•
Standard open differential axles	+	+	Loader control isolator	•	•	Pin and Cone carriage	+	+
Diff lock axles	+	+	External rear view mirrors	•	•	Eurohitch	+	+
Limited slip differentials axles	+	+	Front sun blind	•	•	JCB compact tool carrier	+	+
Creep speed including hand throttle	+	+	Fire extinguisher (UK only)	+	+	Electrical in cab quickhitch pin isolation	•	•
			Additional storage box	+	+			
HYDRAULICS			Roof wiper	+	+			
Servo controls	•	•	ELECTRICAL					
Proportional boom and auxiliary controls	•	•	Road lights front and rear	•	•			
Adjustable constant flow hydraulics	•	•	Reverse lights	•	•			
Single gear pump	•	•	Battery isolator	•	•			
Priority steer valve	•	•	Direction indicators	•	•			
Hose burst check valves	•	•	Rotating beacon	+	+			
JCB Adaptive Load Control	•	•	Front and rear worklights (Halogen)	+	+			
JCB Smoothride system	+	+	Boom worklights (Halogen)	+	+			
Biodegradable hydraulic oil	+	+	Twin reverse light kit	+	+			
			Reverse fog light kit	+	+			
			LiveLink telematics	•	•			
			LED worklights	+	+			
			LED Boom worklights	+	+			
			12v in-cab power socket	•	•			
			Block heater (230V)	+	+			
			Key immobiliser	+	+			
			Keypad immobiliser	+	+			
			Radio speaker installation	+	+			

STANDARD •
 OPTIONAL +
 NOT AVAILABLE ×

NB. Regional variations may apply to standard and optional equipment.





ONE COMPANY, OVER 300 MACHINES.

Your nearest JCB dealer

Telescopic Wheel Loader TM180/TM220

Gross power: TM180 48kW/64hp, TM220 54.5kW/74hp

Payload: TM180 1,800kg, TM220 2,200kg Lift height: TM180 4,534mm, TM220 4,603mm

JCB Agriculture, Rokester, Staffordshire ST14 5JP.

Tel: +44 (0)1889 590312 Email: salesinfo@jcb.com

Download the very latest information on this product range at: www.jcb.com

[facebook.com/JCBAg](https://www.facebook.com/JCBAg) [@JCBAgriculture](https://twitter.com/JCBAgriculture) [youtube.com/JCBAgriculture](https://www.youtube.com/JCBAgriculture)

©2022 JCB Sales. All rights reserved. No part of this publication may be reproduced, stored in a retrieval system, or transmitted in any form or by any other means, electronic, mechanical, photocopying or otherwise, without prior permission from JCB Sales. All references in this publication to operating weights, sizes, capacities and other performance measurements are provided for guidance only and may vary dependant upon the exact specification of machine. They should not therefore be relied upon in relation to suitability for a particular application. Guidance and advice should always be sought from your JCB Dealer. JCB reserves the right to change specifications without notice. Illustrations and specifications shown may include optional equipment and accessories. All images are correct at time of print. The JCB logo is a registered trademark of J C Bamford Excavators Ltd.

